



# Adaptive Computing Lab

## Windows 7 Accessibility Features Magnifier

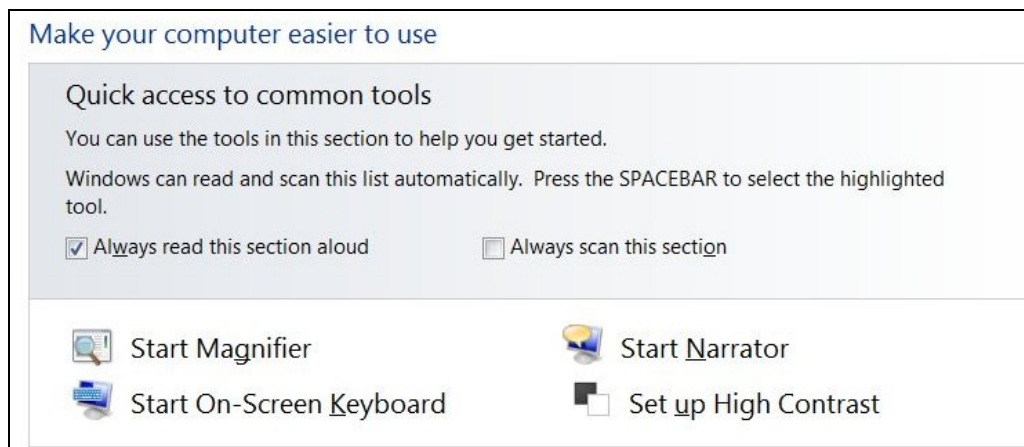
The Magnifier feature in Windows 7 is a dramatic improvement over past applets. Excellent information is available at the Microsoft website. For further info go to:

<http://windows.microsoft.com/en-us/Windows7/Make-items-on-the-screen-appear-bigger-Magnifier>

**Note:** There is a video about Magnifier at this web address.

### Starting Magnifier

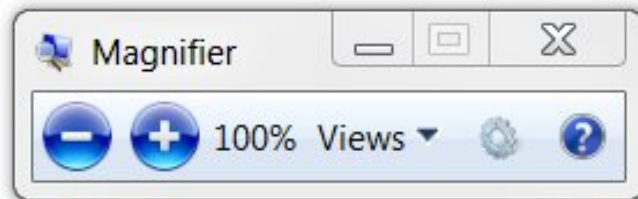
**Windows Logo key + U opens the Ease of Access Center. Click on the Start Magnifier option.**



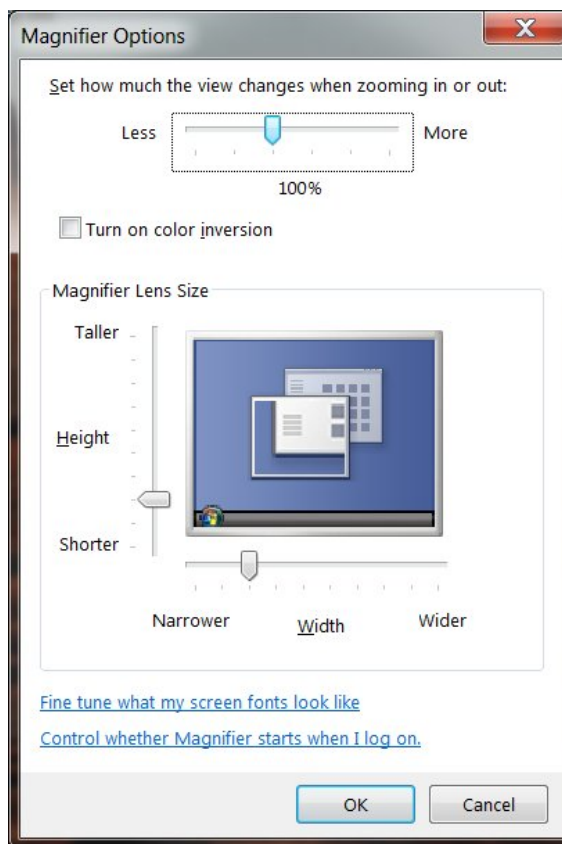
**A shortcut to Magnifier is to use the Windows Logo key plus the + sign. This will automatically start Magnifier.**

## Magnifier Menu Bar

When the Magnifier applet opens you will see a small Menu Bar that allows settings changes. The minus sign and plus sign will decrease/increase the level of magnification. Minimize will put minimize the menu bar to the Taskbar. The X button will close the Magnifier applet. The Question Mark takes you to Help.



The Gear symbol will open the Settings dialog box. Here you may change a number of settings, including opening Magnifier when Windows starts up.



If you do not access the floating Magnifier Menu Bar it will reduce to the icon seen below so that it does not take up much space on the Desktop. Click on the icon to return to the Menu Bar.



## Magnifier Modes

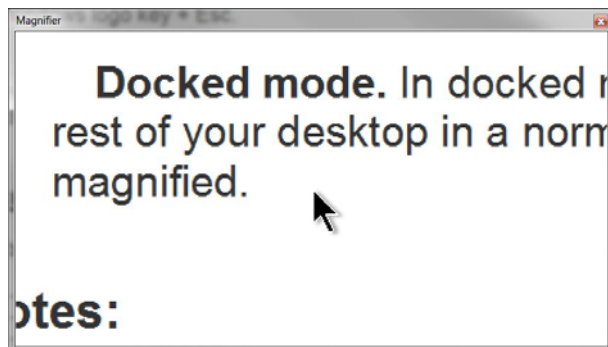
Magnifier enlarges different parts of the screen. This is useful for viewing objects that are difficult to see, but also for seeing the whole screen more easily.

There are three modes:

- **Full-screen mode.** In full-screen mode, your entire screen is magnified. You can then have Magnifier follow the mouse pointer.
- **Lens mode.** In lens mode, the area around the mouse pointer is magnified. When you move the mouse pointer, the area of the screen that's magnified moves along with it.
- **Docked mode.** In docked mode, only a portion of the screen is magnified, leaving the rest of your desktop in a normal state. You can then control which area of the screen is magnified.

## To exit Magnifier

- Press the Windows logo key + Esc.
- Close the Magnifier Menu Bar by clicking on the X in the upper right corner.
- If in Docked mode, click on the X in upper right corner of the window.



## Magnifier Keyboard Shortcuts

The following table contains keyboard shortcuts for working with Magnifier.

Press this key	To do this
Windows logo key + Plus Sign (+)	Zoom in
Windows logo key + Minus Sign (-)	Zoom out
Ctrl+ Alt + Spacebar	Preview the desktop in full-screen mode
Ctrl + Alt + F	Switch to full-screen mode
Ctrl + Alt + L	Switch to lens mode
Ctrl + Alt + D	Switch to docked mode
Ctrl + Alt + I	Invert colors
Ctrl + Alt + arrow keys	Pan in the direction of the arrow keys
Ctrl +Alt + R	Resize the lens
Windows logo key + Esc	Exit Magnifier