



# Adaptive Computing Lab

## Click-n-Type Keyboard at log in

How to make the CNT keyboard be available for user at Log In windows XP.  
Go to the web address listed below:

<http://cnt.lakefolks.com/features.htm>

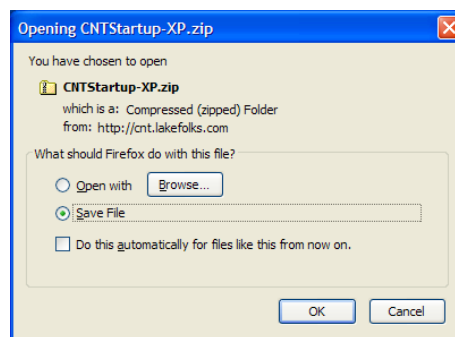
Click on **Ctrl + F** to open the Find feature...usually at the bottom of the browser and it will resemble the image below...type “startup” in the box and Click on the Next arrow.



Click on the Next arrow until you see the paragraph in the image below.

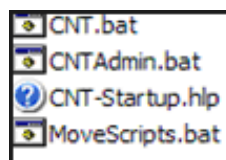
For 2000 Pro & XP Pro users. The procedure involves using the Group Policy Editor to run a copy of Click-N-Type at Logon time. To set this up, download [CNTStartup-2k.zip](#) or [CNTStartup-XP.zip](#) from this site. Extract it's files to any temporary folder, double click [CNT-Startup.hlp](#) and follow the instructions. the form of a tutorial and leads you through the procedure step-by-step.

Double click on the link titled “CNTStartup-XP.zip” to download the .zip file. You will get a dialog box similar to the one below...

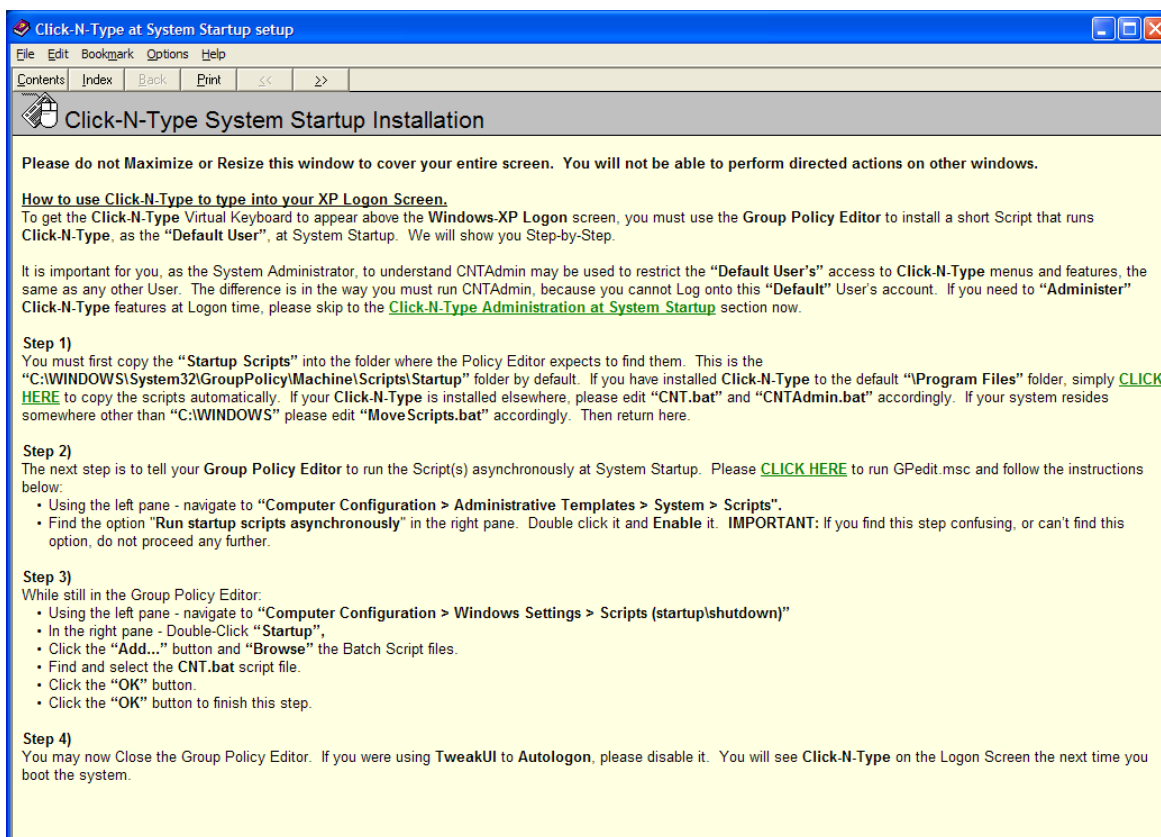


Click on the “Save File” radio button...then click the OK button...make sure you note where you have saved it.

Click on the .zip file. When unzipped there will be four files as shown below. Double click on the CNT-Startup.hlp so that you can see the help files.



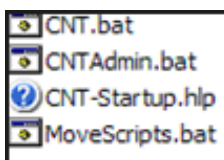
The help file is shown below...



You might want to print out these instructions. Read the instructions thoroughly. You may then follow the instructions provided below:

You must have Administrative rights to perform the necessary actions.

**Step 1:** Go to the .zip folder containing the four files.



Copy the "CNT.bat" file...

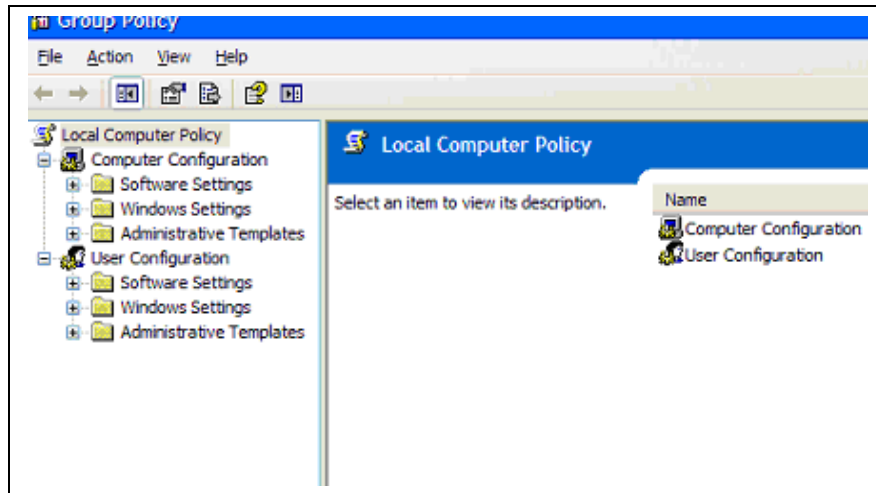
Navigate to the following folder:

**C:\WINDOWS\System32\GroupPolicy\Machine\Scripts\Startup**

Paste "CNT.bat" into this folder.

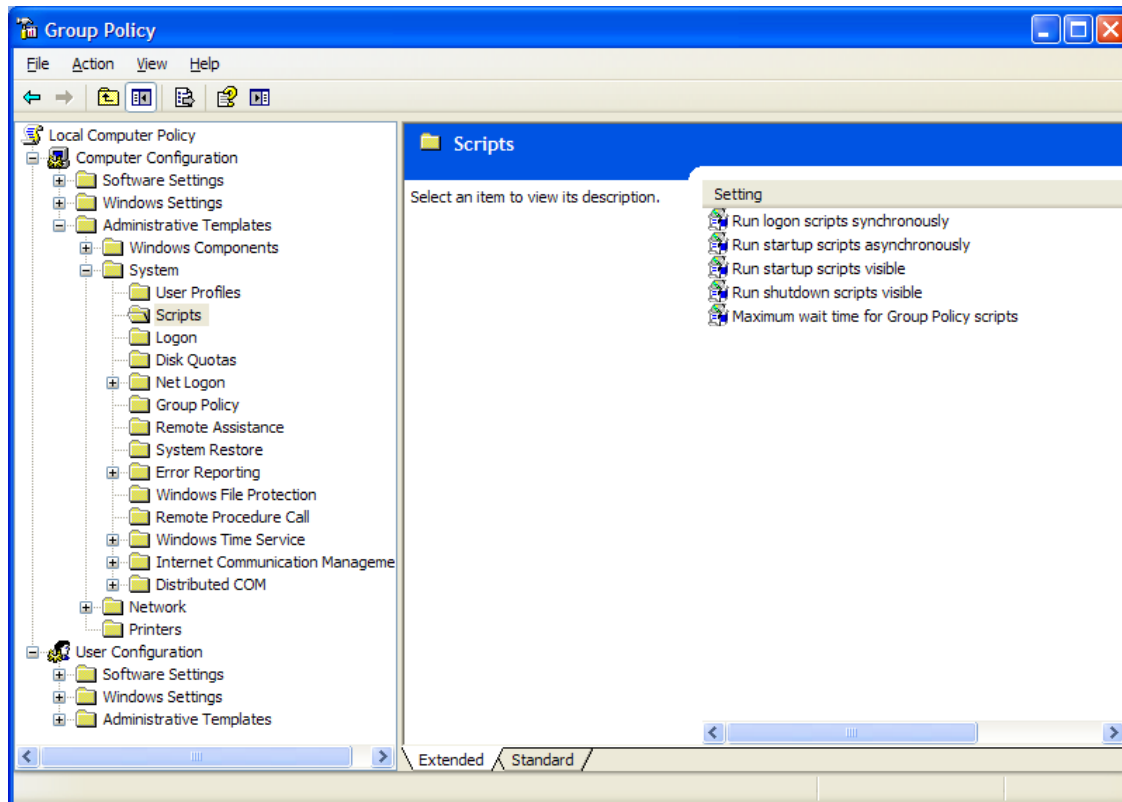
## **Step 2:** Go to Start Menu > Run > and type “GPedit.msc”

This opens the Group Policy Editor as shown below.



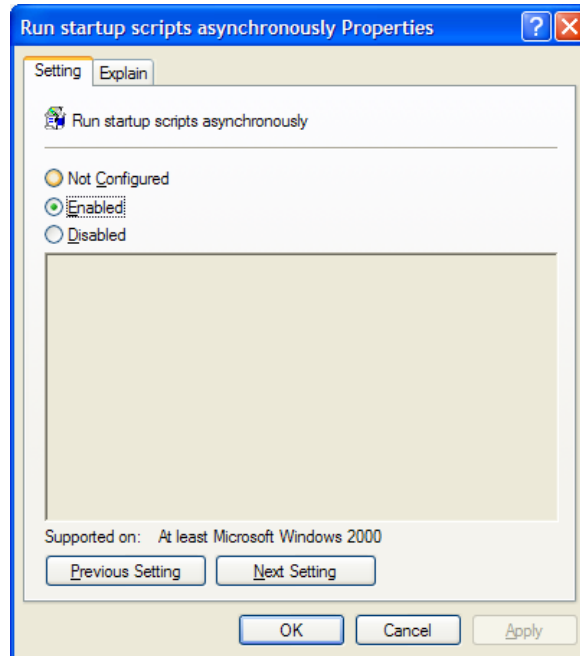
In the left pane:

Select Computer Configuration > Administrative Template > System > Scripts



In the right pane:

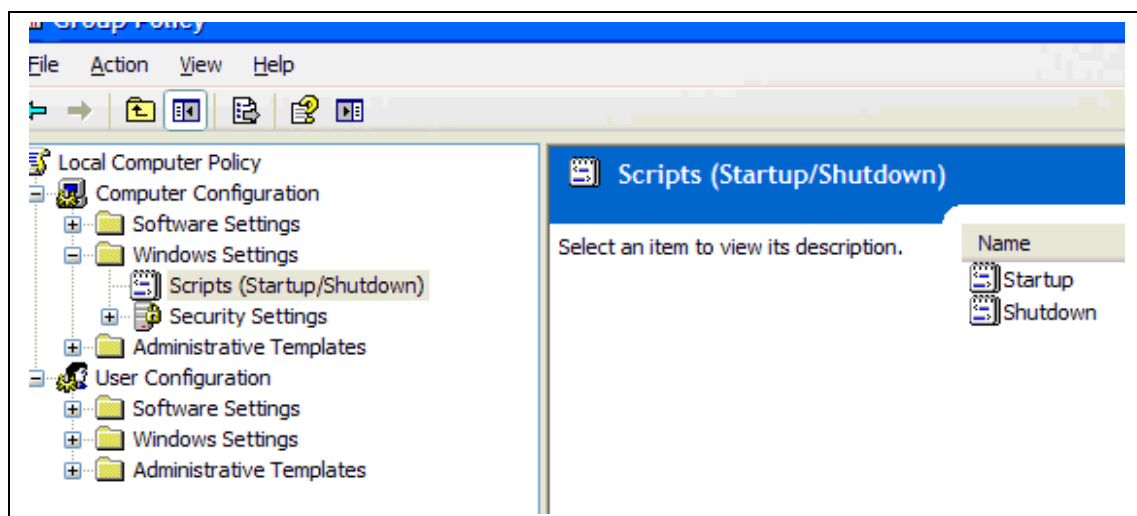
Double click the “Run startup scripts asynchronously” setting. This will open the Properties Box shown below.



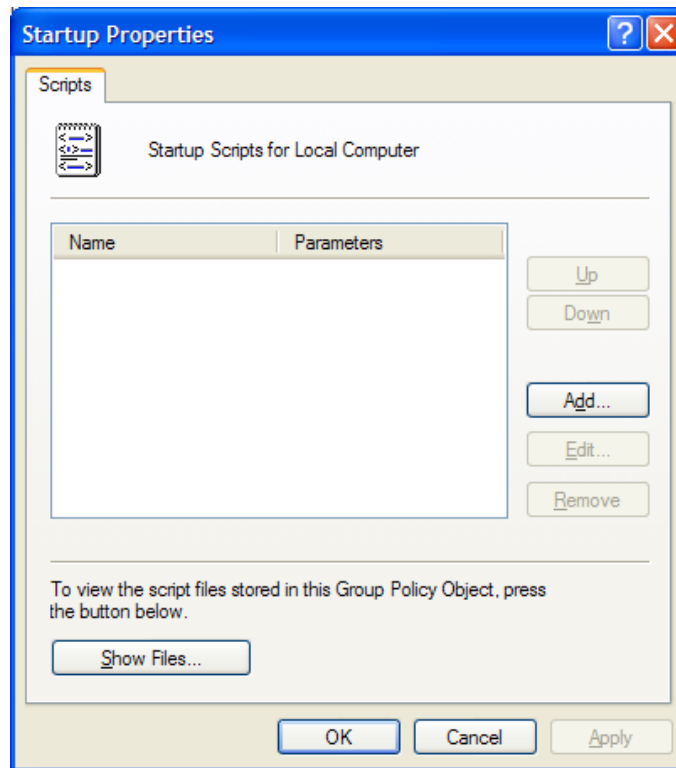
Click on the “Enabled” radio button to Enable the setting. Then click on Apply and then OK at the bottom of the page.

### Step 3:

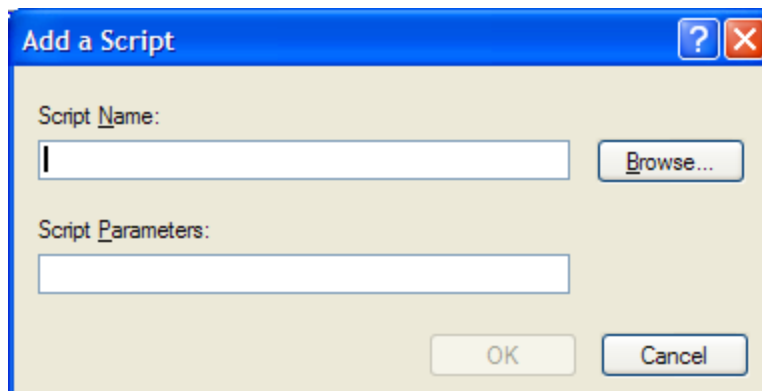
While still in Group Policy Editor...in the left pane: navigate to ...  
Computer Configuration > Windows Settings > Scripts (startup \ shutdown)”  
in the right pane: Double click on Startup.



This brings up the Startup Properties dialog box

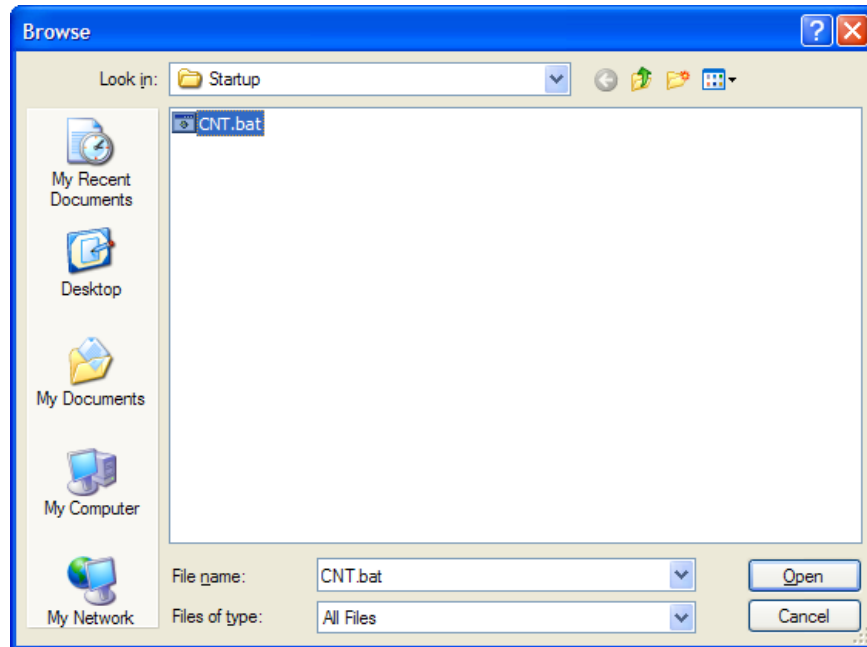


**Click on Add, this will open the Add a Script dialog box: Click Browse.**

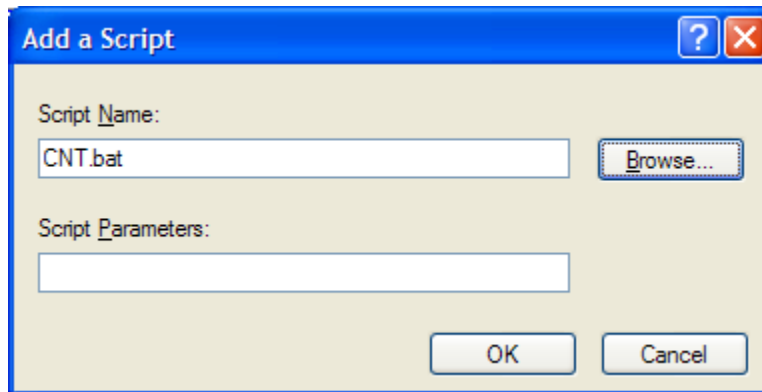


You will be directed to the folder below:

**C:\WINDOWS\System32\GroupPolicy\Machine\Scripts\Startup**



**Click on the CNT.bat file to highlight it and then click on the Open Button. The CNT.bat file now shows up in the Add a Script dialog box. Click on OK.**



**Click ok to close the Startup Properties box.  
Click on the X to close the Group Policy dialog box.  
The next time you log in, Click n Type will be available at login.**

**NOTE: The keyboard that appears at login will not be the same Click N Type keyboard that you normally use with Windows.**